



Living Certainly.

If you can see your future,
you know you're on the right track.

THE
MIDPOINT
RESIDENCES

Another quality development of:



OUR STORY

COMPANY PROFILE



We are Pacific Land Ventures & Property Development, Inc.

We are a domestic corporation engaged in real estate development and property management. Incorporated in 2005, we have always been passionate about redefining the standard of customer satisfaction and the Filipino home.

COMPLETED PROJECTS



PUEBLO EL GRANDE *(SOLD OUT!)*

Located in Tayud, Consolacion, Cebu

Offers exclusivity of living in homes inspired by Spanish-Mediterranean villas of Southern Europe

MACTAN PLAINS SUBDIVISION *(SOLD OUT!)*

Located in Brgy. Mactan, Lapu-Lapu City

An enclave of uniquely Asian and contemporary homes



COMPLETED MIDPOINT TOWERS



Exterior Photo of
Towers 1 & 2

THE MIDPOINT RESIDENCES

Few units left!

Unit turnover started
since February 2019.



Pocket Parks at Ground Floor



Temporary Gym &
Recreational Facilities
at the Penthouse Floor

Choosing a home can be hard, but we know that possibilities always outweigh the uncertainties. Imagine seeing your future unfold before your eyes. A life where goals become achievements. Where you can see a clear vision of the moments you can share with friends and family before they even happen.

A life of certainty.



Living Certainly.

If you can see your future,
you know you're on the right track.



THE MIDPOINT RESIDENCES

The MIDPOINT Residences is built around that idea.

To give potential homeowners a place that gives the best that life has to offer. A home that shows possibilities rather than risks, where the future does not have to be as uncertain.

THE MIDPOINT RESIDENCES



- A two-tower residential condominium project
- Located at the Banilad end of A.S Fortuna St. in Mandaue City's PREMIER residential area as evidenced by many high-end subdivisions in the area
- The first 28-floor condominium tower to be located in the area

WHAT WE OFFER



BEING AT THE MIDPOINT

SECURITY

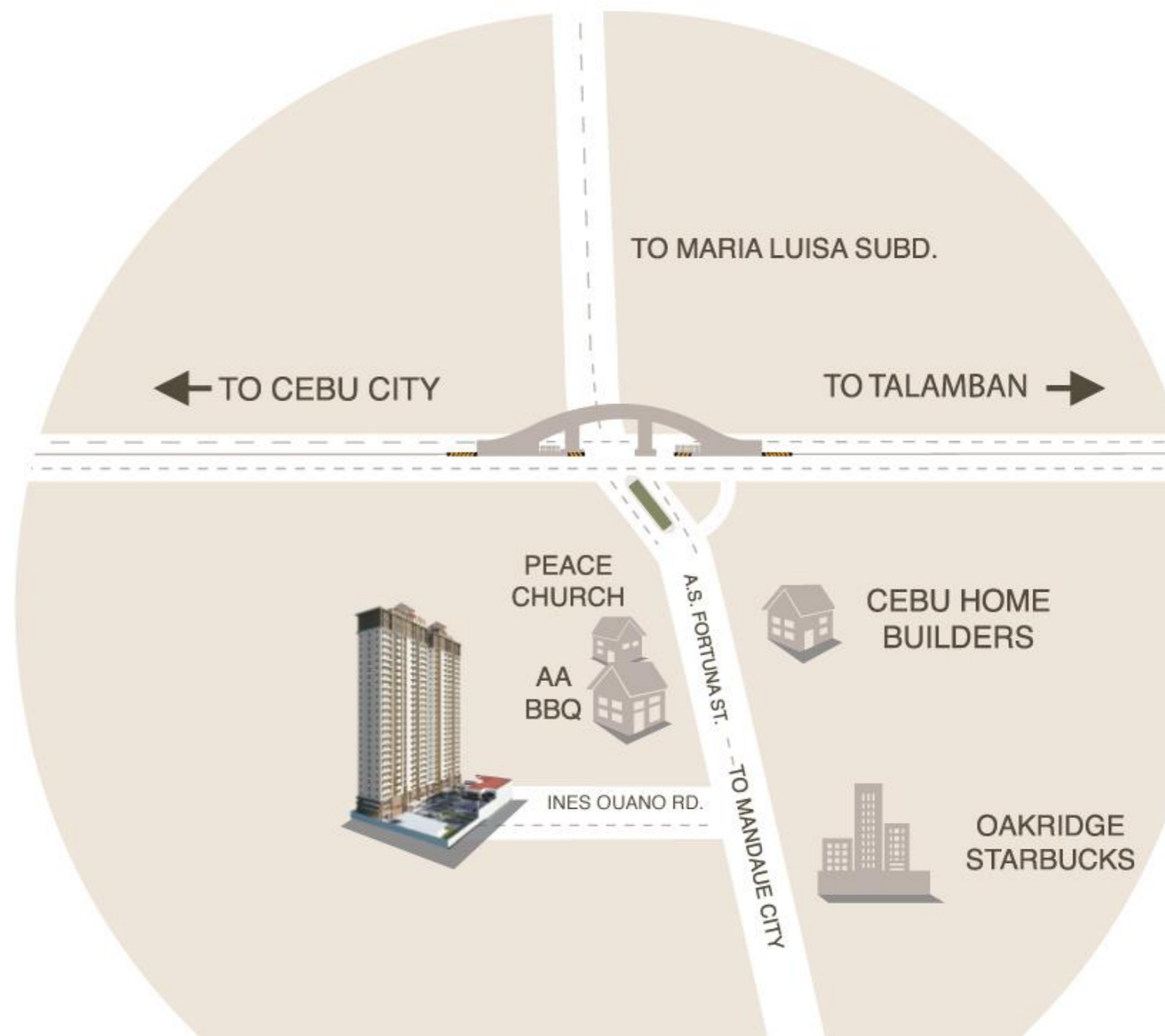
You are more established in your career, livelihood, and lifestyle

CONVENIENCE

You have the means to be able to go where you want and get what you want when you want to

VALUE FOR MONEY

You want to get more than just the promised quality for the amount invested but a total and satisfying experience



LIVING AT THE MIDPOINT

- We offer well-developed financing structure ensuring that you are able to see your investment through
- Being close to the business locales north and south of the city, optimizing your time and choices
- The amenities and facilities that are made available to you are above and beyond your expectations



WE ARE NEAR...



WE ARE NEAR...

- A mere 350 meters away is the **Oakridge Business Park**, a 3-hectare property with office and retail spaces, restaurants, supermarket, and events and meeting venues.
- 300 meters away from the **Adoration Convent of Divine Peace**, home of the Pink Sisters.
- 250 meters away is **Cebu Home Builders**, a Big Box retail type of building material store owned by Cebu Oversea Hardware which is the biggest building material supplier in Visayas and Mindanao.
- 200 meters away and within Oakridge Business Center is **Starbucks Coffee**, one of the best coffee shops in the country, if not the world.
- 900 meters away from **Banilad Town Center**, more popularly called “BTC”, offers a charming variety of shops and restaurants that definitely adds more spice to the Cebuano lifestyle.

WE ARE NEAR...

- 1 kilometer away from **Gaisano Country Mall**, one of the landmarks in the Banilad area. This mall is indeed convenient for those living nearby.
- 1 kilometer away from the **University of Cebu – Banilad Campus**, one of the largest universities in Cebu. The **University of the Visayas – College of Medicine** and its Medical Center, as well as the **University of San Carlos – Talamban Campus**, are also within a 3-kilometer radius of MIDPOINT;
- The almost fully-developed **Cebu I.T. Park** of Ayala Land, is also within a 2-km radius of MIDPOINT;

FEATURES AND AMENITIES



- Swimming pool, fitness gym, and small basketball court
- Chapel / meditation area
- Landscaped garden with mini park and playground
- Individual mailboxes
- High-speed elevators
- Centralized garbage collection area with segregated garbage chutes

FEATURES AND AMENITIES



- Main lobby with reception area
- Commercial spaces at the ground floor
- Fire alarm and sprinkler system
- Entrance with guardhouse
- Multi-level podium and basement parking
- Standby generator



UNIT FEATURES



- Pre-installed window-type air-conditioning units in all bedrooms and living area
- Fiber-to-the-home (FTTH) broadband provisions for telephone and CATV exclusively provided by PLDT
- Melamine board kitchen cabinets with stainless steel sink
- Granite countertop
- Non-LPG, purely electrical provision for cooking
- Fire alarm and smoke detector in each unit
- Electrical provision for filter-type range hood

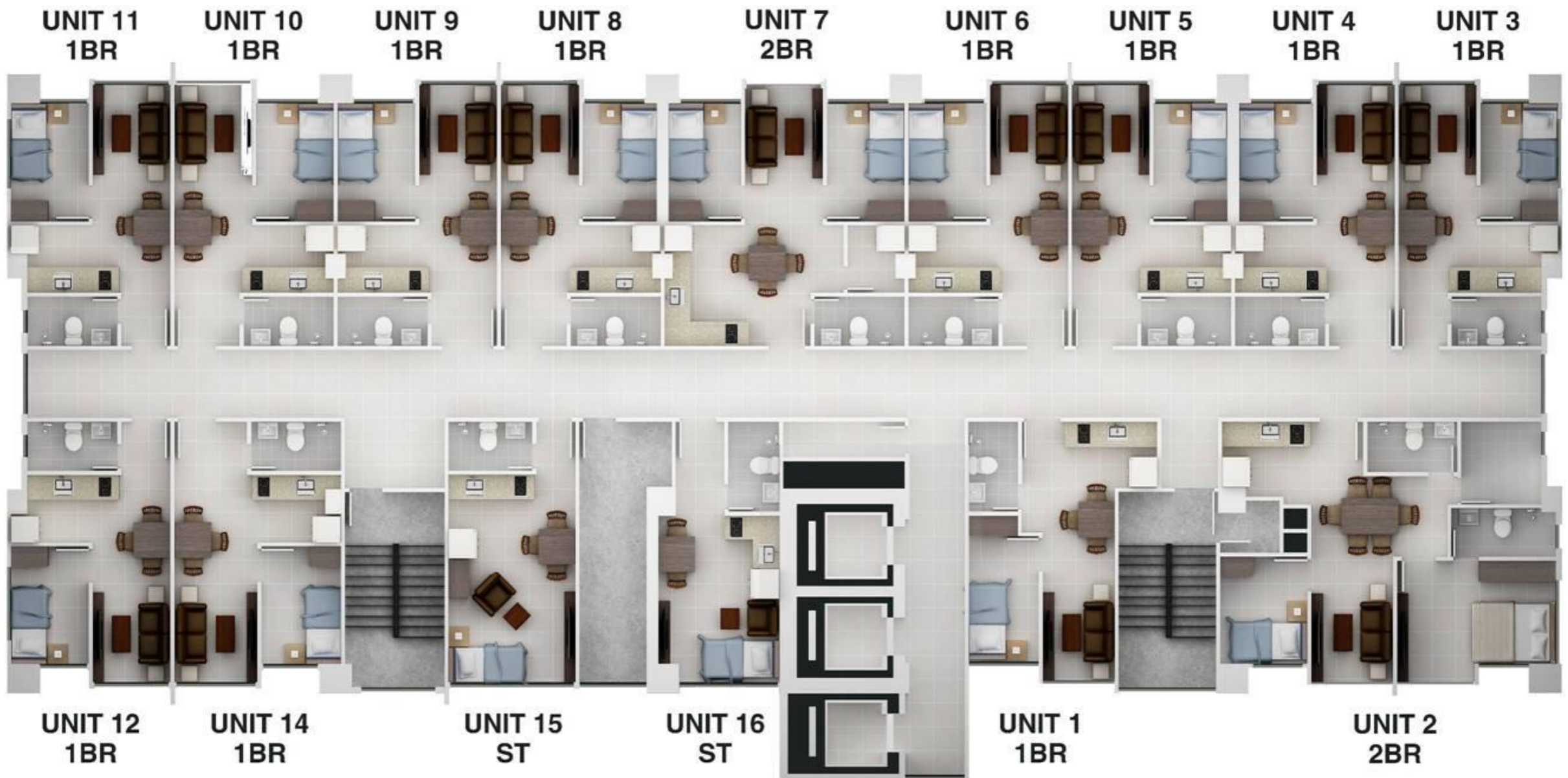
UNIT FEATURES



- Melamine board bedroom closets
- Painted cement walls, dry wall partitions, and ceilings
- Tiled main flooring
- Bathroom fixtures and accessories
- Pre-installed exhaust fan in toilet and bath area
- Ceramic floor and wall tiles for toilet and bath area
- Electrical provision for portable water heater at shower area

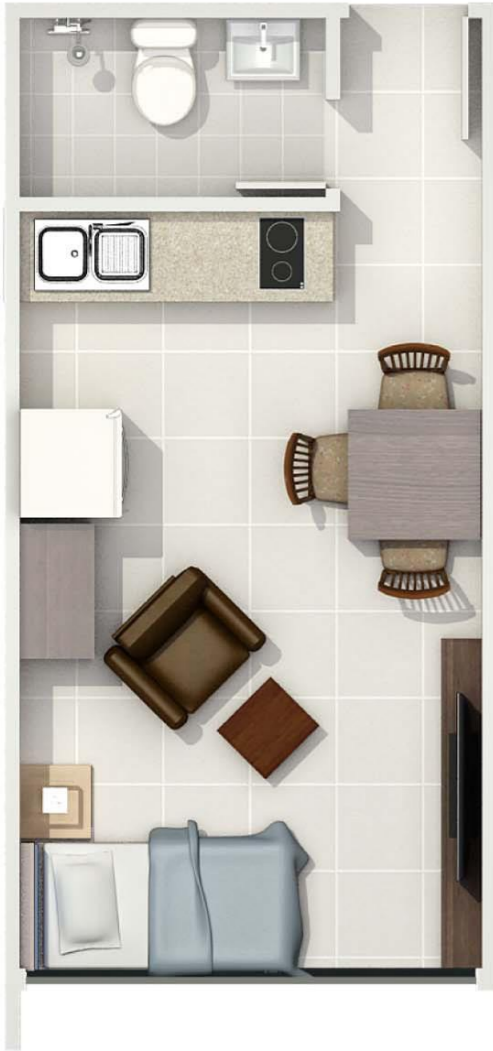
TYPICAL FLOOR PLAN

TOWER ONE



TYPICAL FLOOR PLAN

TOWER ONE



STUDIO TYPE
approx. 20 sq. m.



ONE-BEDROOM UNIT
approx. 24 sq. m. - 26 sq. m.



TWO-BEDROOM UNIT
approx. 36 sq. m. - 50 sq. m.

TYPICAL FLOOR PLAN

TOWER TWO

UNIT 12
1BR

UNIT 11
1BR

UNIT 10
1BR

UNIT 9
1BR

UNIT 8
1BR

UNIT 7
1BR

UNIT 6
1BR

UNIT 5
1BR



UNIT 14
1BR

UNIT 1
ST

UNIT 2
1BR

UNIT 3
1BR

UNIT 4
1BR

TYPICAL FLOOR PLAN

TOWER TWO



STUDIO TYPE
approx. 21 sq. m.



ONE-BEDROOM UNIT
approx. 24 sq. m. - 33 sq. m.

TOWER 1 STUDIO UNIT



TOWER 1 ONE-BEDROOM UNIT



TOWER 1 ONE-BEDROOM UNIT



AMENITIES – ACTUAL PHOTOS

SWIMMING POOL



AMENITIES – ACTUAL PHOTOS

SWIMMING POOL



AMENITIES – ACTUAL PHOTOS

ROOF DECK



THE
MIDPOINT
RESIDENCES



For inquiries contact:

Tel: +63 32 343 3675/ +63 32 343 3677/ +63 32 345 8023

Mobile: +63 917 626 3308

Fax: 343-3718

Email: marketing@pacificlandventures.com

www.pacificlandventures.com



Living Certainly.

If you can see your future,
you know you're on the right track.